

Children's Urology Group, PL

MARK E. KOLLIGIAN, M.D. • ETHAN G. POLSKY, M.D.
SISIR BOTTA, M.D. • KATHERINE CORBYONS, M.D.

(813) 874-7500, (727) 456-1055

www.childsurologygroup.com

PLASTIBELL - CARE AFTER NEWBORN CIRCUMCISION

Your son's circumcision was performed using the "bell" technique. The following instructions should be followed to ensure proper care following the procedure.

1. **PLASTIC RING:** The plastic ring will fall off within 3 - 7 days. If it remains in place after the 7th day, please call the office so that we can evaluate your child.
2. **BATHING:** Sponge bathe your son until the plastic ring falls off.
3. **CLEANING:** You may clean diaper area with diaper wipes or soap and water at diaper changes. Apply Vaseline/petroleum gel **once the ring falls off**. If **stool** touches the ring, wipe it the best you can but do not "dig" into the ring.
4. **IRRITABILITY:**
 - A. Your child may be irritable during the first 72 hours following the circumcision. Cuddling and feeding may console him, just as cuddling and feeding calmed him immediately after the circumcision was performed.
 - B. We recommend Tylenol for pain. Avoid Ibuprofen (Motrin, Advil).
5. **BLEEDING and SWELLING:** Blood spotting on the diaper is expected. Moderate swelling and redness of the head of the penis is expected. If you notice a continuous ooze of blood, or severe redness around the shaft of the penis, please call the office. It is not unusual to have a bruise at the base of his penis where the local anesthesia was injected. This will go away.
6. **POSTOPERATIVE OFFICE VISIT:** Your doctor may want you to schedule a postoperative visit for 2 weeks following the date of surgery by calling the nearest office during the hours of 8:00 a.m. to 5:00 p.m., Monday through Friday.

St. Petersburg: 727.456.1055

Tampa: 813.874.7500

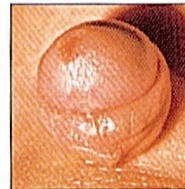
To reach the doctor after the above hours and on weekends, the answering service will direct you from the above telephone numbers.

| Infants' Acetaminophen | | |
|---------------------------------------|-----------|-----------|
| Oral Suspension – "New" Concentration | | |
| 160 mg/5mL | | |
| Weight (lb) | Age (mos) | Dose (mL) |
| 6-11 lbs | 0-3 mos | 1.25 mL |
| 12-17 lbs | 4-11 mos | 2.5 mL |
| 18-23 lbs | 12-23 mos | 3.75 mL |
| 24-35 lbs | 24-36 mos | 5 mL |

PlastiBell Ring Ligature



1



2

PlastiBell
Circumcision Device

TO SUMMARIZE:

1. No bath until ring falls off (sponge bath)
2. No ointment until ring falls off – then use petroleum gel/Vaseline
3. If stool touches the ring, wipe it the best you can but do not "dig" into ring
4. Use Tylenol/Acetaminophen.